

## FAQs @ The Fire Element for Interior Spaces

**Exactly what qualifies as the fire element when you need it as a remedy?** There are differences of opinion about just how red a color needs to be in order to qualify. And I often advise that if the color is border line, then find something more definitively fiery.

### **True Red**



True red works, but not everyone likes this shade.

### **Berry Colors**



Cranberry, raspberry and plum color can work on a large scale as the fire element. For an averaged sized room, the display of fire color should be at least the size of several pillows or an area rug.

### **Maroon & Burgundy**



Maroon and burgundy count as fire and are popular in many décor schemes in a timeless way.

### **Hot Pink & Magenta**



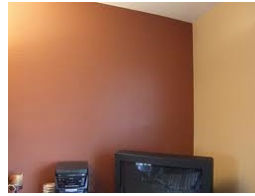
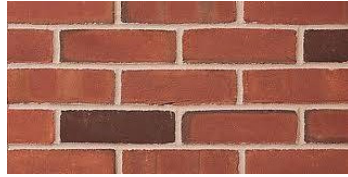
Hot pink on a large scale can work as fire and this is a popular answer to a girl's bedroom since little girls often love pink.

### **Cool Pink**



Very light pink has a cooling affect and **cannot be considered fire**. To that extent, we can say it is safe to have light baby pink in an area that should NOT have the fire element. Paired with a lot of white color (metal), the examples in the photos above are not representations of fire.

### **Rust or Brick**

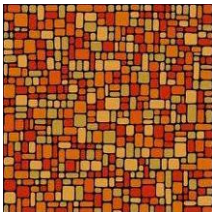


People sometimes refer to brown and “adobe” colors as red, as in “brick red.” But these colors are more the earth element than fire. If it looks brown in color, it is more the earth element.

### **Red-Orange**



Above are examples of reddish-orange colors which are very intense and could qualify as fire. Below is an example of a mixture of red and orange. This is a judgment call, but even with a little green in the pattern, it seems fiery enough too.



### **Cherry Wood-Stained**



I am frequently asked if cherry wood counts are the fire element. Usually it is stained as in the photo of the night stand. I do not see it as fiery enough. It is more brown than red. And unstained cherry wood is actually very light and not at all the fire element.

## Painted Wood



As opposed to a stain, wood painted bright red counts as the fire element, as is a red wall.

## Purple and Wine Color



Plum purple or grape on a large scale can work as fire.

## Deep Purple or a Blue-Purple



When the purple is so blue, as in the example given, it is now more the water element than the fire element.

## Lilac or Lavender



Lavender is so light that it is not red enough to be fire and not blue enough to be water. It is an in-between color and can be used almost anywhere.

## How much of the color do we need?

Using rugs, drapes, art work, wall color, and red furnishings need to **be really noticeable** in order to qualify as enough of the fire element. As an example, a room with all black furniture and a small red pillow will not qualify as enough of the fire element if it is needed for the room in question.

If the fire element is competing with other strong colors in the room, then the fire element has to be even more pronounced. In the photo below you can see green walls, but a lot of red furniture to compensate. In the next photo, you can see a mostly white room, with a signature red piece as fire.



### Does the Fire colored object have to be solid red?



The bedrooms shown above have so much fire color that the other colors are dwarfed in comparison. But the chair, which is striped with several colors, is not fiery enough to work on its own as a remedy for a room.



A rug or piece of art work that is primarily red can qualify as fire.

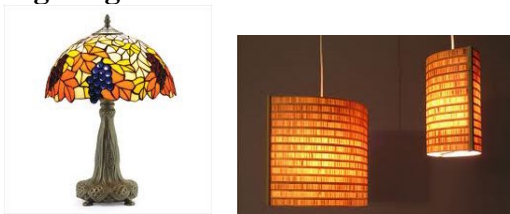
### What else qualifies as Fire besides red color?

#### Heat



A row of hair dryers that are in operation many hours a day can be considered fire as in a restaurant kitchen that is use many hours a day.

### Lighting

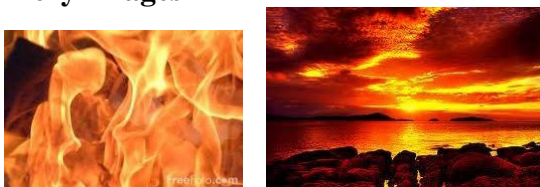


Both standing lamps and hanging lamps that are on for **many hours** per day can work as fire.

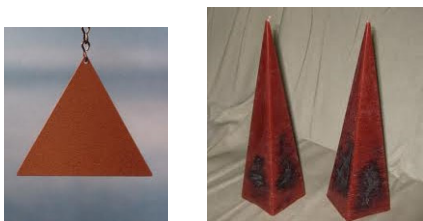


A singular night light plugged into a wall socket is **not** enough fire to cure a whole room, whereas a high wattage floor light or spot light can work as fire.

### Fiery Images



Large depictions of fire, such as photographs of a red sunset can work as fire. This is an example of red art work, if it is on a large enough scale.



Red triangles and cone shapes are representative of the fire element, but they need to be large to change the energy of a room.

## When Fire Combines with Other Elements or Objects:

### A Red Car



A red car is a lot of metal. However, the color red can dominate in the same way that fire dominates metal in the cycle of the elements. A red car in a garage can work as fire as can the red cabinets along a garage wall.

### A Red Metal File Cabinet



Again we have an example of metal items that happened to be painted red to work as fire.

### A Red Flower



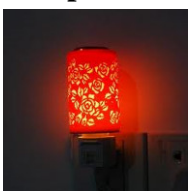
A simple bouquet of live red flowers is a combination of wood and fire. This might be fine in some environments, but wood and fire should not be placed together in every circumstance that requires fire.

### Red Ceramic



Ceramic is the earth element. Red ceramic can be a combination of earth and fire.

### Lamps and Salt Lamps



Red lamp shades and salt lamps can work as fire when they are lit for many hours a day.

## Fire and Water Together



Although they look interesting, fountains that pair a flame with water are manufactured by companies uninterested or uninformed about Five Element Theory. I never recommend this type of fountain because it undermines the whole point of using water or fire.

## More Frequently Asked Questions about Fire

**Q: I have heard that a red door is lucky in Feng Shui. Is this true?**



A: Any large display of red color is the fire element and whether or not a door is lucky depends on many other features that have to be calculated such as the year built, the compass orientation and where the door is located within the floor plan. Thinking a red door is lucky is a Chinese cultural belief or superstition that is overly generalized.

**Q: If I paint a wall red, what happens in certain years when the annual energy is harmed by fire?**



A: You need to over compensate with the ideal element, such as metal, when the fire element is present in annual cycles that are in conflict. It is actually hard to compensate for a whole wall that is red. Unless I recommended it to you, I would shy away from a red wall as a solution to your fire quota.

**Q: If a bedroom needs fire and there is a lot of red used, won't that keep the occupants stimulated and make it harder to sleep?**

A: Red color is in fact stimulating to many people. It can increase appetite too. This is why a bedroom that needs fire might be best with the more muted shades of red or not to over do it. It depends on other features such as the person's own energy level. Some people can handle a lot of red in their bedroom and some cannot.

**Q: What should I do we do if red color is needed and it clashes with the existing décor or the person does not like red color?**

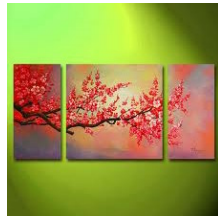
A: No one should be forced to use red color if they do not like it. This is when you would use lighting instead. A person can have a light go on in the room for hours per day to work as fire. Automatic timers make it convenient to accomplish this.



**Q: Doctors' offices often don't want to use red color where they need it because it reminds them of blood. What should be done in this case?**



A: For doctor's offices I recommend they use lighting instead of red color. They can also use red art work that is of happy images like red hearts or flowers or more subtle such as charts with red frames.



**Q: Do fireplaces count as the fire element?**



A: A fire place is not automatically the fire element. If anything, most fireplaces are a large display of earth because most have a stone façade. But if a real fire is burning often in the fire place, then of course it works as the fire element. Some people use their fire places frequently, whereas some people only use their fire place rarely for winter holidays.

This is also true for **outside fireplaces and grills**. Unless the occupant is using the outside fireplace daily, they do not have to be concerned about the location of the fireplace outside near the house.



**Q: Is it okay to use red Christmas decorations for a month or two each year?**

A: I get asked this question yearly and the answer is that you need to be careful in using red holiday decorations. Most of the time the decorations are in the living room or dining room, which is better than the bedroom. Still, if a person spends a lot of time in their living room or family room, they will be influenced by the fire element, as manifested in decorations.



**Q: If a mirror on one side of a room reflects red color from the other side of the room, do we consider that the fire element on the wall with the mirror?**



A: Yes, this is a case where the mirror can draw the fire color to the other side of the room. You have to be careful with mirror placement in this regard because some rooms are split between different sectors where one side of the room should not have fire.

c. 2011 Kartar Diamond/ Feng Shui Solutions ®